

HomeGrown: Tools for Local Farmers and Ranchers



Photo: Brandon Doran via Flickr



GREENBELT ALLIANCE

GREENBELT.ORG



San Francisco

Oakland

San Jose



Sunrise Colors - San Francisco

©David Yu photography





Levi's
49th Anniversary
SONY



PHOTO: MATTHEW ROTH







Bay Area's
Greenbelt
Lands



SONOMA

NAPA

SOLANO

MARIN

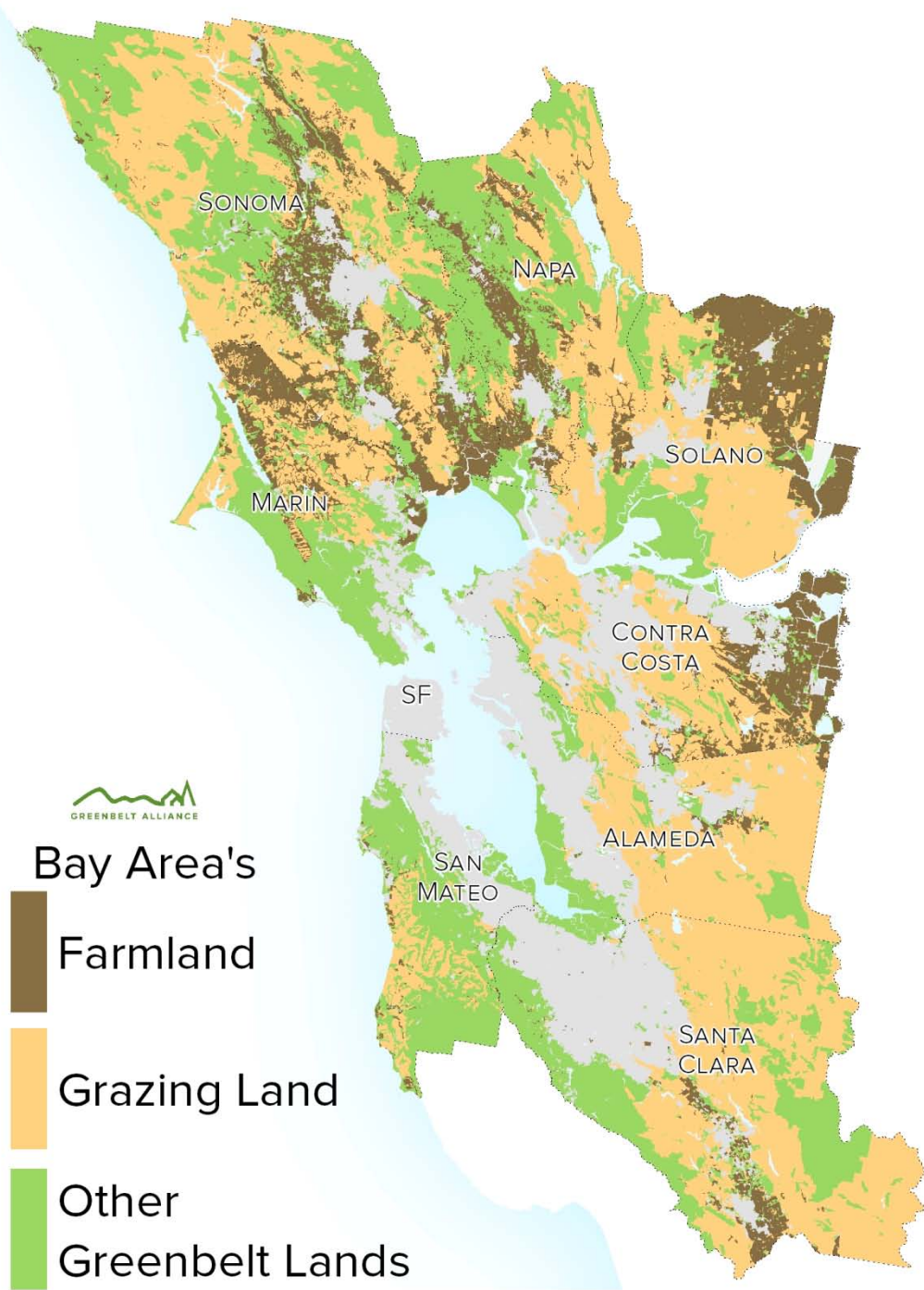
CONTRA
COSTA

SF

ALAMEDA

SAN
MATEO

SANTA
CLARA



GREENBELT ALLIANCE

Bay Area's



Farmland

Grazing Land

Other

Greenbelt Lands



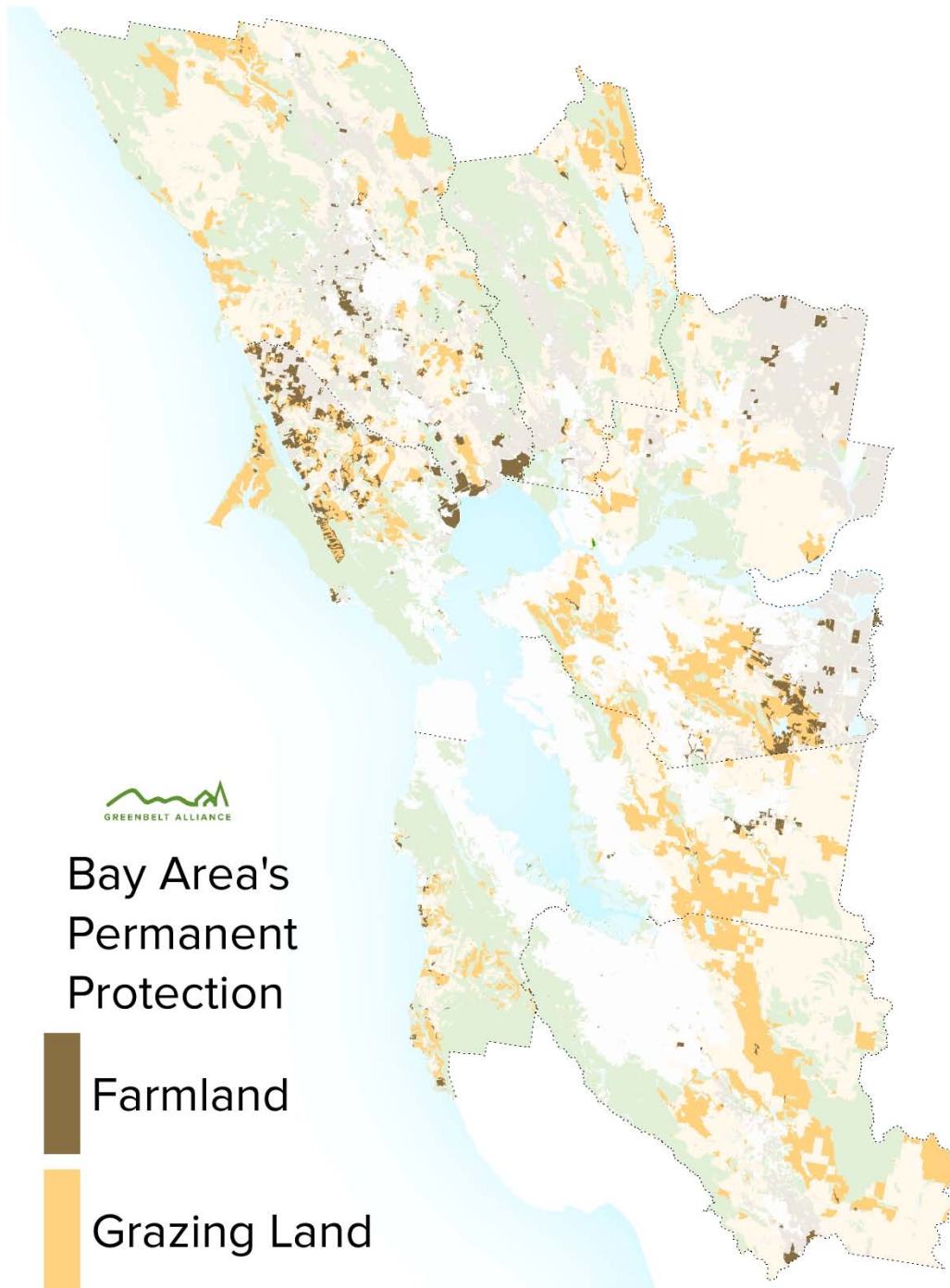
Bay Area's Permanent Protection



Farmland



Grazing Land





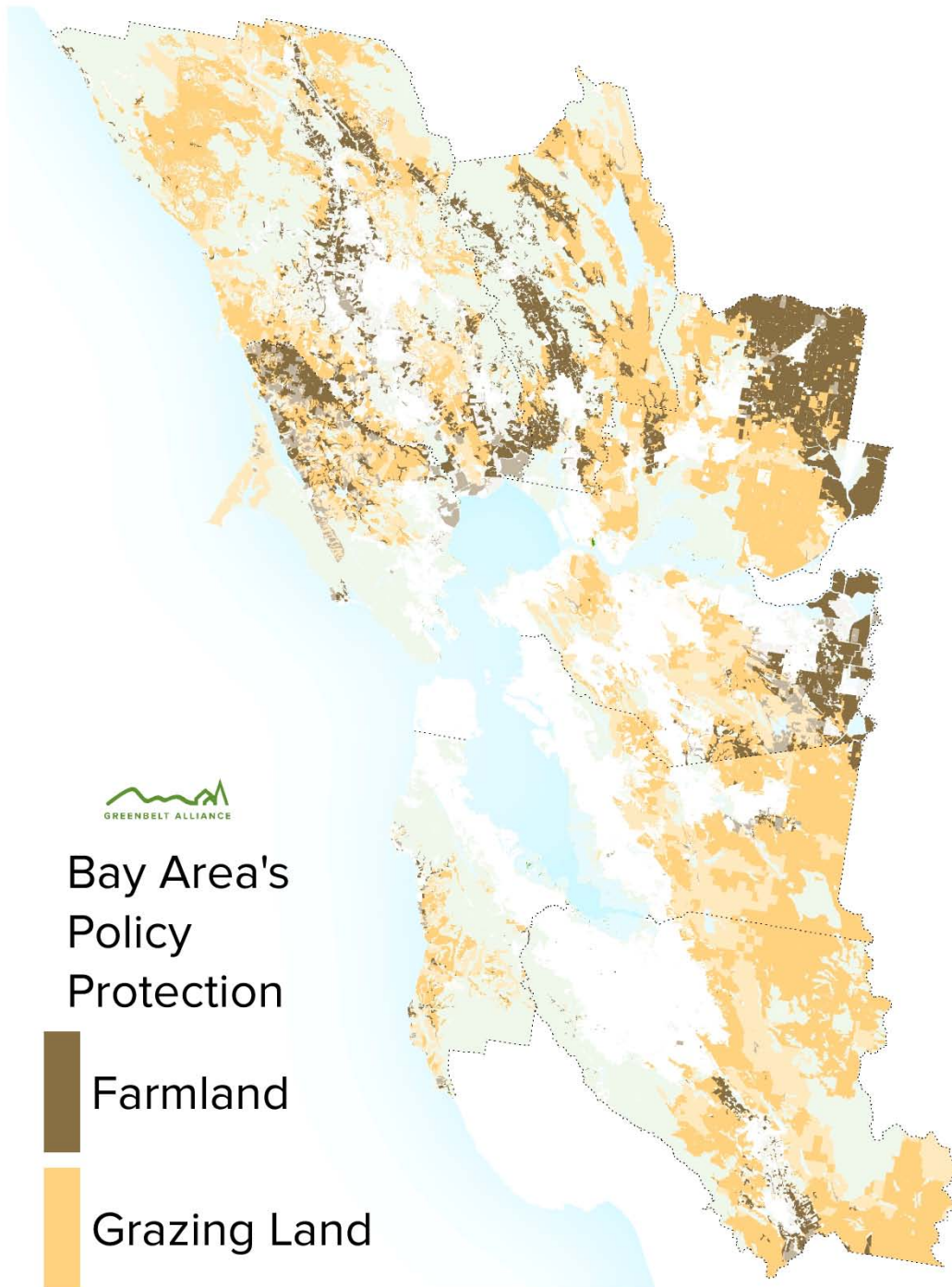
Bay Area's Policy Protection

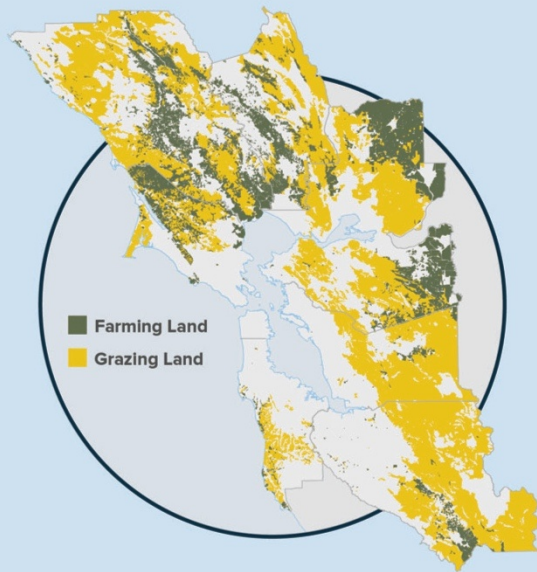


Farmland

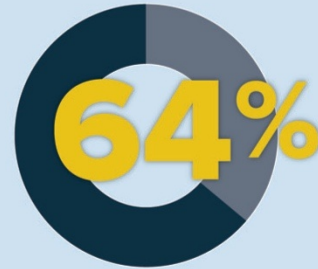


Grazing Land





■ Farming Land
■ Grazing Land



of our 3.6 million acre
GREENBELT
is
FARMS & RANCHES
that's 2.3 million acres



Annual Gross Production
Value of Farms & Ranches



Total Economic Value



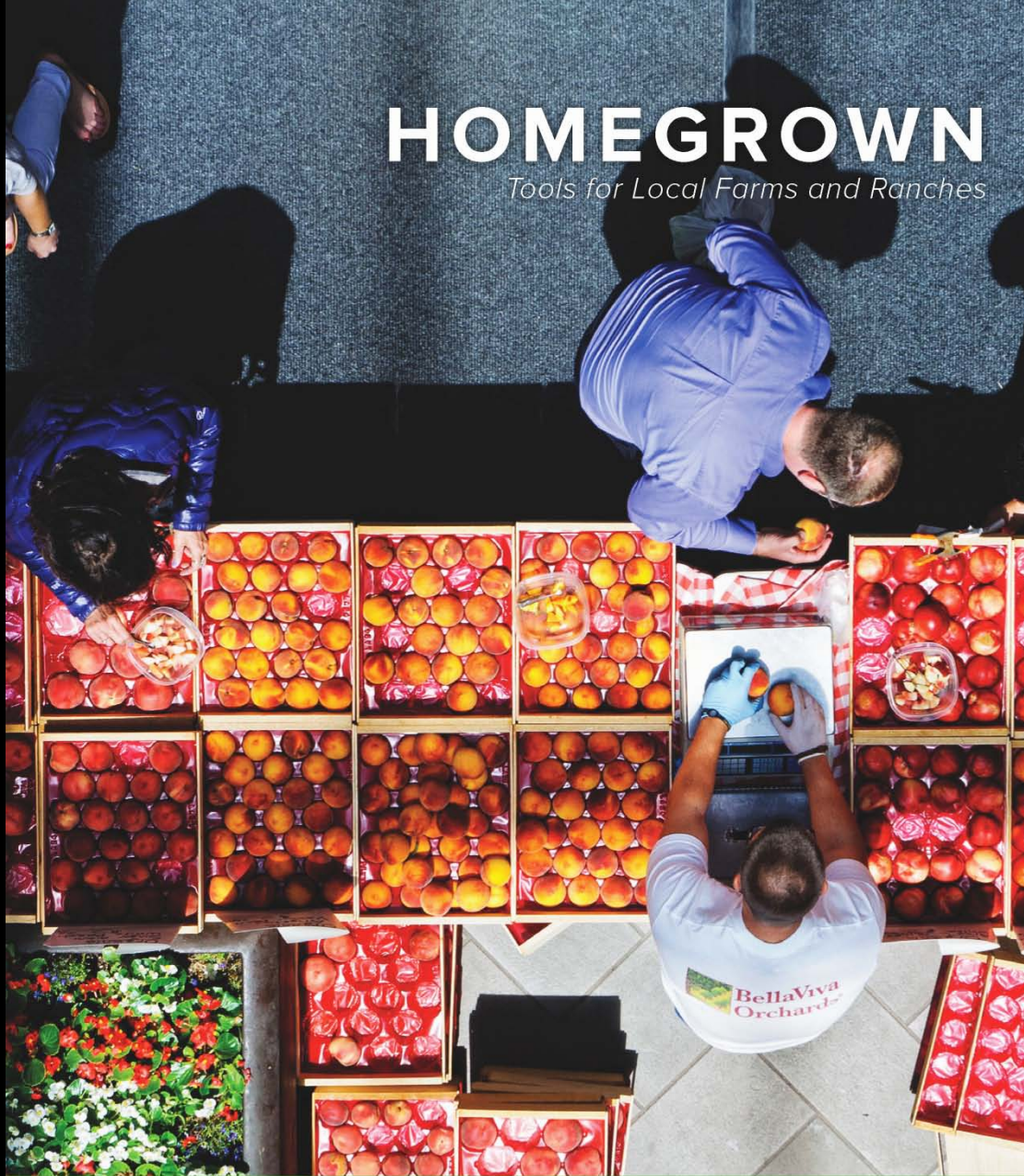
Acres of Farms & Ranches
Lost To Sprawl Since 1984

That's an area of land more than
7x the size of San Francisco.

The threat of working lands being converted to urban development continues, threatening the region's food industry and the social, economic, and natural values it provides.

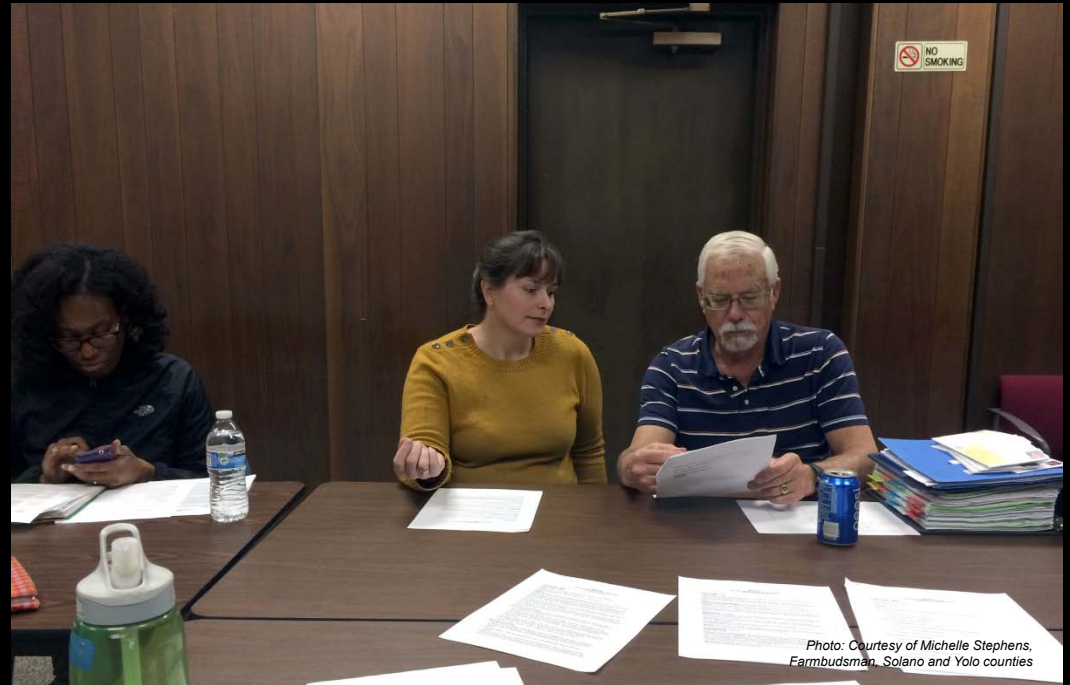
HOMEGROWN

Tools for Local Farms and Ranches



Six Barriers to Farming and Ranching

Regulatory Challenges



Six Barriers to Farming and Ranching

Regulatory Challenges

- Dedicated county personnel
- County regulatory improvement initiatives
- Resource conservation permit coordination



Photo: Courtesy of Michelle Stephens, Farmbudsman, Solano and Yolo counties

Six Barriers to Farming and Ranching

Land Conversion



Photo: Taylor Hanigosky

Six Barriers to Farming and Ranching

Conflicts between
landowners



Photo: Bill & Vicki T via Flickr

Six Barriers to Farming and Ranching

New farmers and ranchers



Six Barriers to Farming and Ranching

Funding



In Every County...



In Every County...

Adopt policy that supports farmers' rights, avoids converting working lands to urban uses, and mitigates for unavoidable loss of working lands



Photo: Taylor Hanigosky

In Every County...

Dedicate county personnel to assist and advocate for farmers and ranchers on local regulatory and planning issues



In Every County...

Demonstrate and publicize the social, economic, and environmental values of the county's farms and ranches



In Every County...

Promote and market local farm direct sales efforts such as u-picks, farmers' markets, and community-supported agriculture programs to residents and visitors



Photo: Taylor Hanigosky

In Every County...

Identify long-term funding mechanisms



What's Next?

Contra Costa County Local
Agency Formation Commission
(LAFCO) Agricultural and Open
Space Policy





GREENBELT ALLIANCE

GREENBELT.ORG